

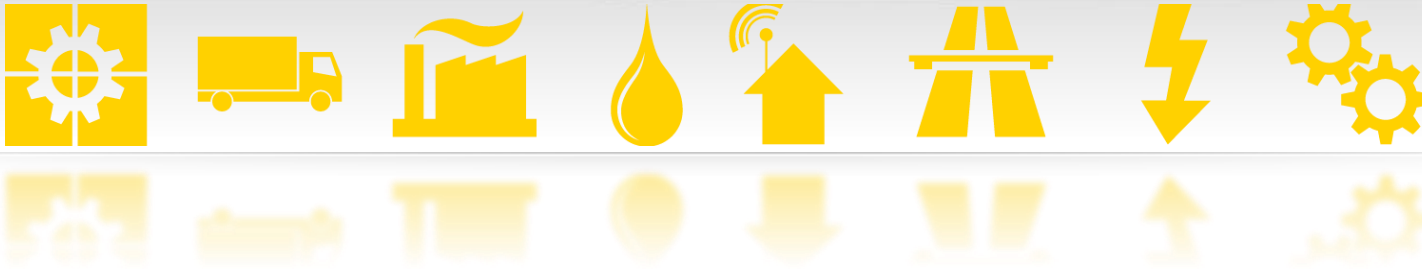


atvise® References

A selection of projects and customers



References.



© Certec EDV GmbH, Austria

www.certec.at

1 Water & Wastewater: Customers & Projects



Water and Wastewater

atvise® References

1.2 Ellab d.o.o.

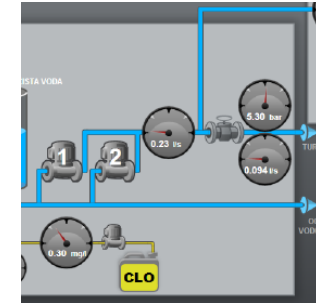
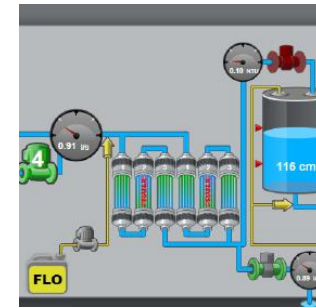
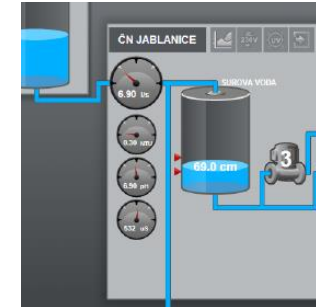


System Integrator: Ellab
Industry: Water/Wastewater
Project: Water system supervision
Product: atvise® scada
PLCs: TBOX (Semaphore)
Final customer: KP Velenje, d.o.o. Slovenia



Ellab is a leading application company in Slovenia in automation and supervision of water and wastewater systems. Ellab built for the customer KP Velenje a system of pump stations and water reservoirs with over 60 remote stations as well as three water treatment plants. In a system with over 4.000 tags Ellab managed to realize real time data exchange over various communication media. Within the water company organization, atvise scada is used in a central supervision room (water plant location), in several offices all over the company and through mobile phones in the field.

»Pure web technology based scada and there for supporting the capability of working on any device was one of the decision making factors«, said Primoz Roser, the Water Division manager of KP Velenje.



1.3 Endress + Hauser



System Integrator: Endress + Hauser

Industry: Water/Wastewater

Project: Water supply Kematen

Product: atvise® scada

PLCs: Mitsubishi

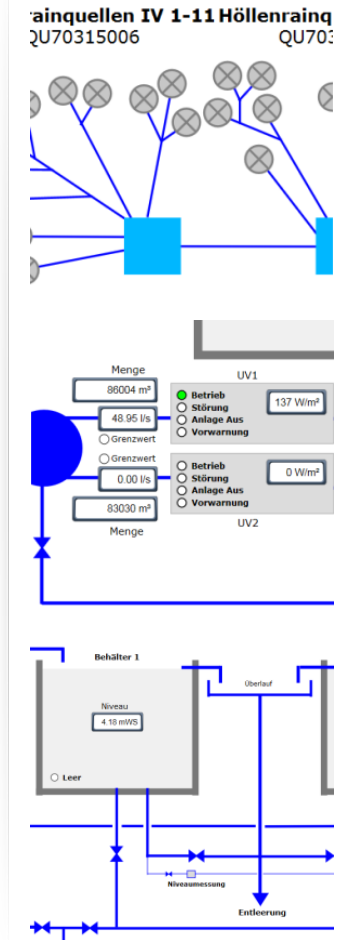
Final customer: Municipality



Austria/Switzerland/Germany, 2011

At the retrofit project of the water supply for the Austrian Town Kematen, atvise scada was integrated by Endress + Hauser as the overall HMI/SCADA interface.

The project consists of three supply units which are controlled separately and atvise scada provides remote and local control for the water supply service department as well as to the municipality. While the municipality has only observation status, the water supply service department can intervene accordingly within the process. Access is device independently - laptops, tablets or smartphones, etc. Any device with a web browser can connect to the HMI due to the fact that the solution is based on native web technology.



1.4 KSC GmbH und RHC Automation with the Waterassociation Wulkatal



System Integrator: KSC GmbH + RHC Automation

Industry: Wastewater

Project: Scada for wastewater

Product: atvise® scada

PLCs: Beckhoff

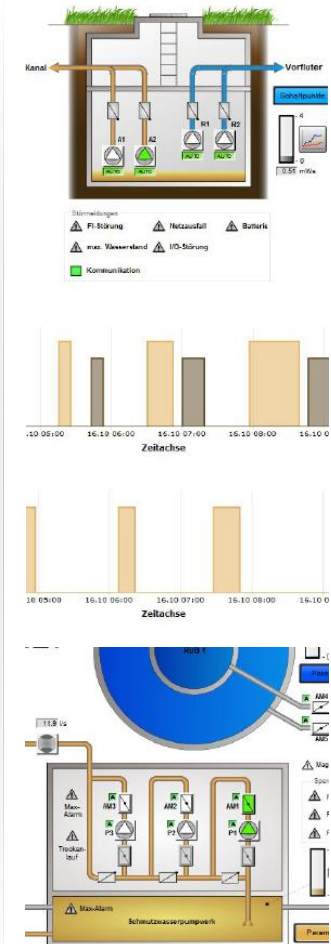
Final customer: Water Association Wulkatal




Austria, 2015

The Water Association Wulkatal, in Burgenland / Austria, replaced the existing SCADA system against an atvise® scada. The Project included 13 water transition buildings and pumping stations of the association. The existing plant controls were replaced by Beckhoff controllers, which were coupled via OPC-UA directly over the broadband connections with the atvise® scada. The object-oriented engineering in combination with OPC UA enables efficient and fault reduced working - both in plant engineering as well as in commissioning. The visualization in pure web technology coupled with the licensing philosophy of atvise® scada provides maximum flexibility when setting up new operator and monitoring stations at headquarters as well as the access through technician laptops, etc. in the field.

The programming of the new outstations and the engineering of the atvise® scada was provided by RHC automation. A completely new communication concept for the connection of external stations was implemented by the company KSC GmbH, with the latest in communication technology such as SHDSL, WiMAX, UMTS, etc.

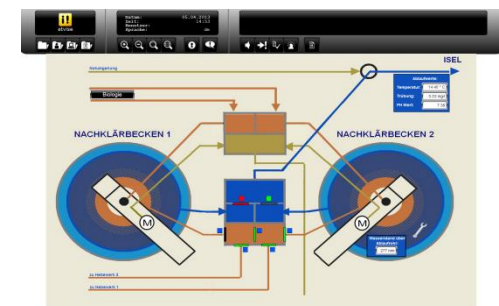


1.5 Wastewaterassociation Hohe Tauern

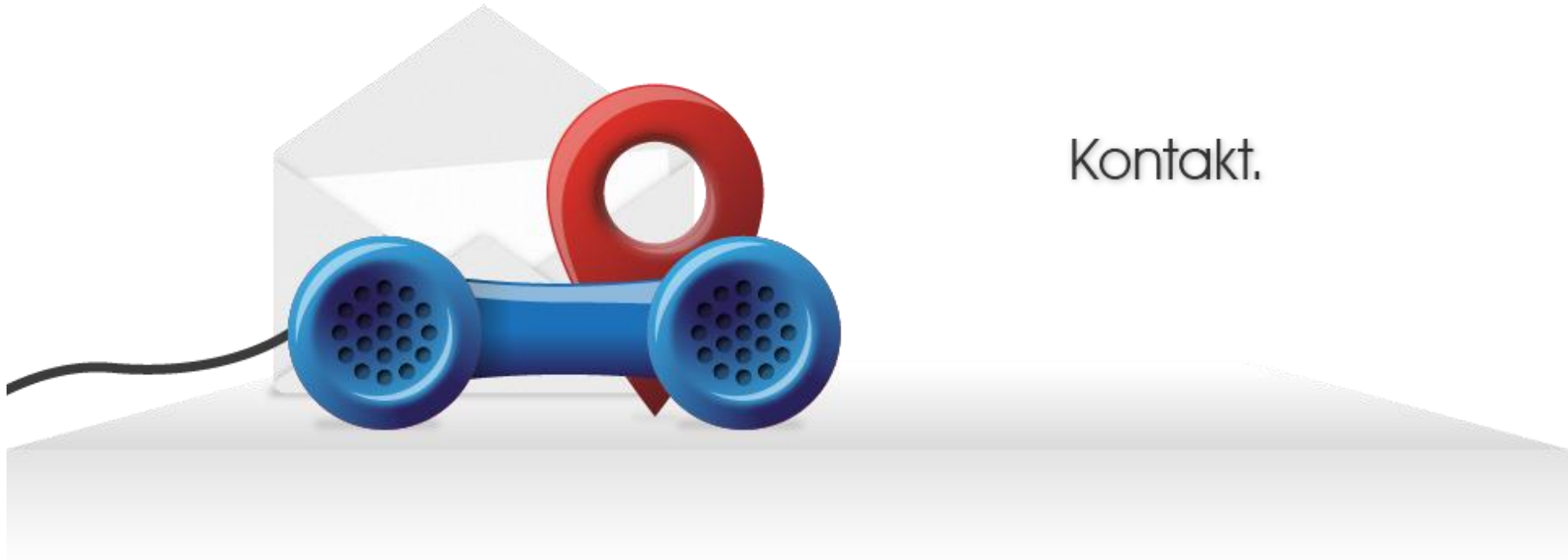
System Integrator:	Wastewaterassociation Tauern	Hohe
Industry:	Water/Wastewater	
Project:	Scada for wastewater	
Product:	atvise® scada	
PLCs:	Various	
Final customer:	Wastewaterassociation Tauern Süd	Hohe

Austria,

Regional sewage treatment plants with a large number of external systems with central monitoring by atvise®.



Kontakt.



Certec EDV GmbH

Kasernenstraße 29
7000 Eisenstadt

Tel.: +43 2682 75799 - 0
Fax: +43 2682 75799 - 5000
E-Mail: info@certec.at